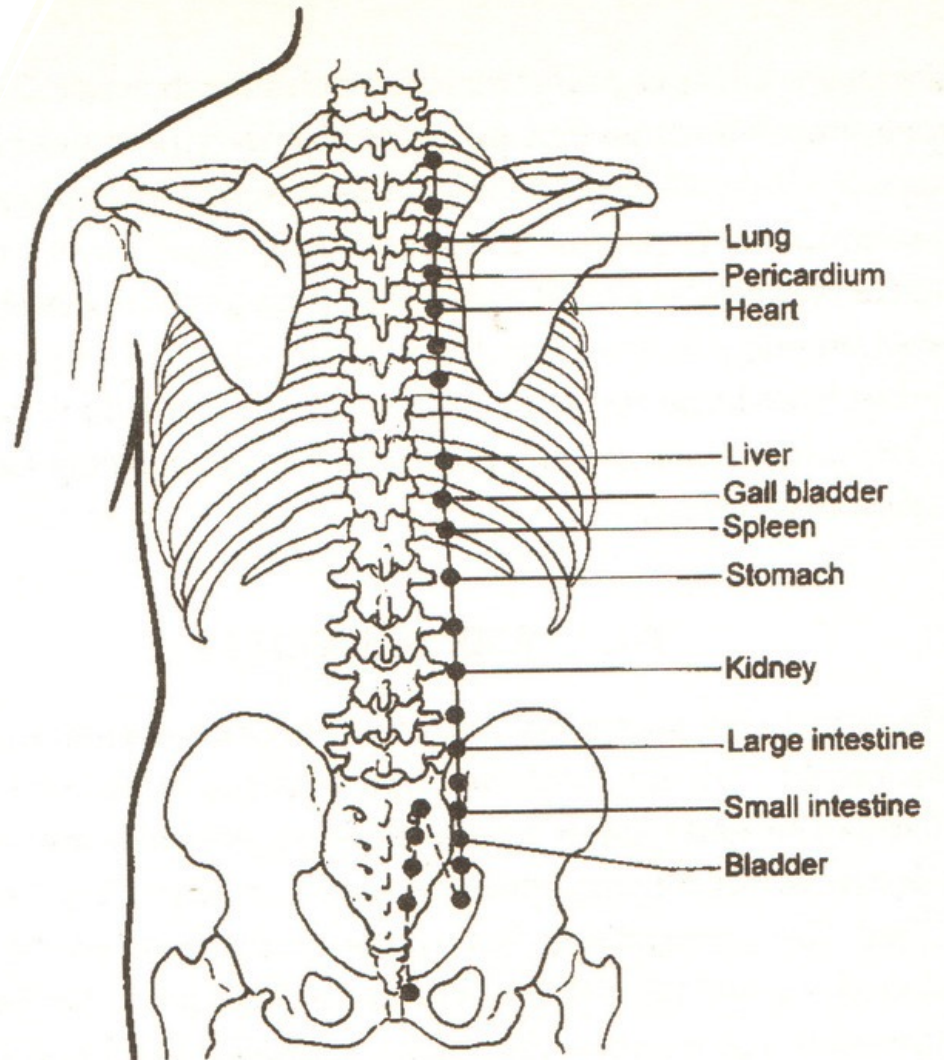


Aggressive Energy Treatment (AE)

Points

The points needled are the back *shu* or Associated Effect Points of the six yin organs. The points are needled bilaterally:

- Bladder 13 - Lung
- Bladder 14 - Pericardium
- Bladder 15 - Heart (see Caveat!)
- Bladder 18 - Liver
- Bladder 20 - Spleen
- Bladder 23 - Kidney



THE BACK SHU POINTS

Needle Technique

When treating for AE, the needles are inserted just under the surface of the skin so that they grab and do not fall out, but flop over. This superficial insertion helps draw the AE out from the *zangfu* and at the same time prevents it from being driven deeper.



Signs of AE

Aggressive Energy is present if:

Redness (erythema) appears around the needles; the redness may last anywhere from a minute to an hour.

There are significant changes in the patient's pulses or CSOE

Needles should be left in place until the redness clears. This may take anywhere from 10 minutes to one hour.



Examples of Erythema





Caveat Protecting the Monarch

In Alchemical Healing, we are particularly attentive to the well-being of the Heart – the Emperor/Empress of the Kingdom of the Body Mind Spirit. For this reason, we never attempt to draw AE from the Heart (through BI 15) until we have fully cleared all the other ministers. The Heart must be cleared after all the other needles are removed so that we do not risk contaminating the Monarch's chamber when the gates to the other ministers are open.